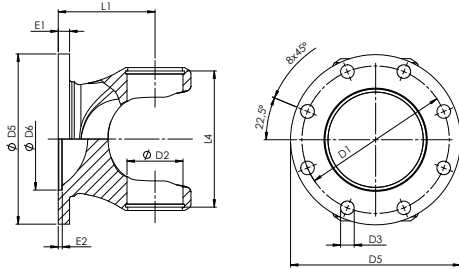
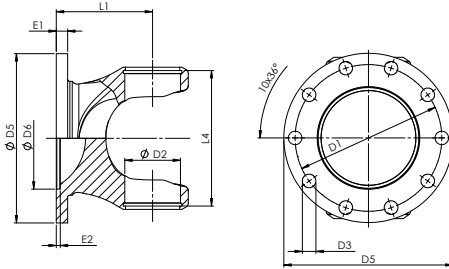


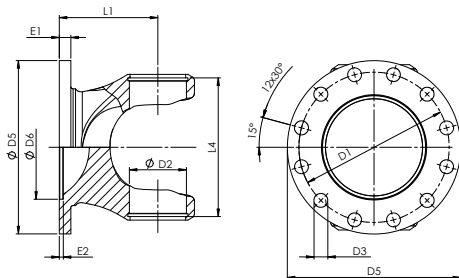
**201 Gabelflansch / Flange**



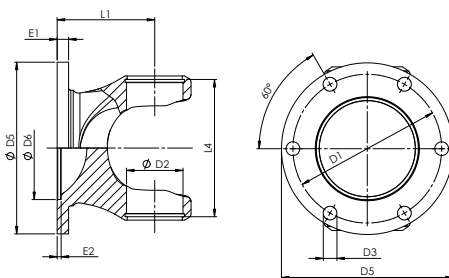
Typ A



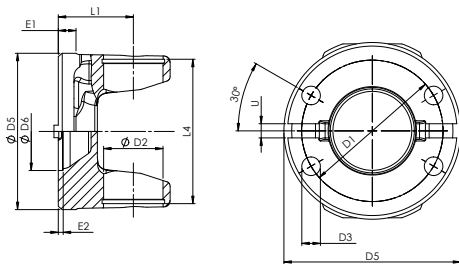
Typ B



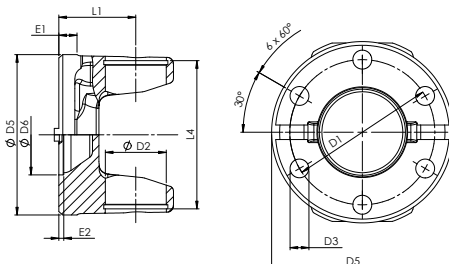
Typ D



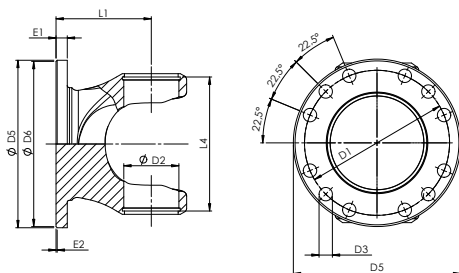
Typ G



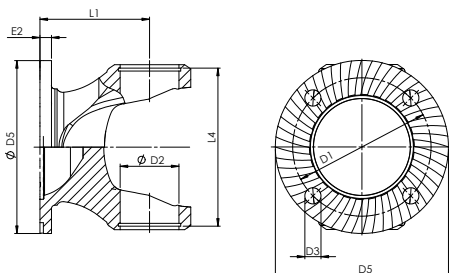
Typ H



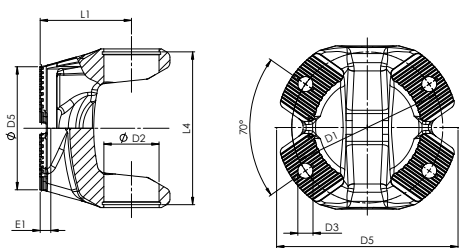
Typ I



Typ K



Typ O

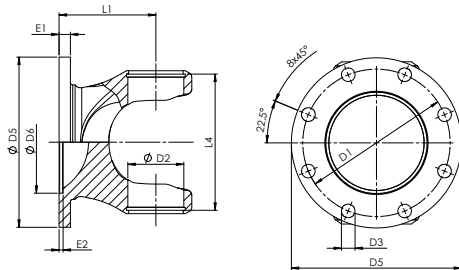


Typ P

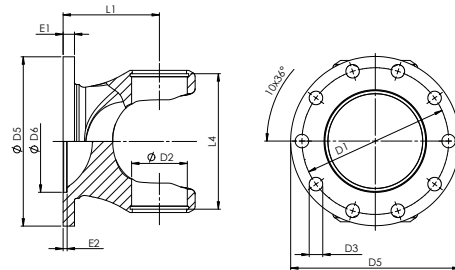
## 201 Gabelflansch / Flange

Sachnummer	Typ	Kreuz	D1	D2	D3	D5	D6	E1	E2	L1	L4	α	Hinweis	Preis
Part number	Type	Joint											Reference	Price
201-121-01033	G	34 x 89	84	34	8	100	57	7	2,5	48	92,00	15°		105 €
201-124-01024	H	34 x 89	80	34	8,4	100	50	9	2,5	48	92,00	15°	KRAMER	71 €
201-124-01038	H	34 x 89	80	34	10,5	100	50	9	2,5	48	92,00	15°	UNIMOG	71 €
201-200-16278	H	38 x 89,2	80	38	10,5	100	50	9	2,5	48	92,00	15°	UNIMOG	73 €
201-194-15748	I	38 x 110	101,5	38	10,4	120	72	7	3	55,7	118,40	20°		109 €
201-195-15496	I	38 x 110	101,5	38	10,4	120	72	7	3	56	113,40	35°	UNIMOG	120 €
201-195-16092	A	38 x 110	101,5	38	10	120	75	8	2,5	75	113,40	35°		71 €
201-195-16317		38 x 110		38		120	75	8	2,5	75	113,40	35°	Flansch ungebohrt Flange not bored	71 €
201-196-10612	P	38 x 110	100	38	11,1	120		13		75	113,40	35°	MAN, IVECO	67 €
201-197-15219	O	38 x 110	95	38	13	120	120	10		75	113,40	20°		207 €
201-253-01081	A	42 x 104,5	101,5	42	10	120	75	8	2,5	75	107,70	35°		53 €
201-253-15721		42 x 104,5		42		120	75	8	2,5	75	107,70	35°	Flansch ungebohrt Flange not bored	53 €
201-254-16447	P	42 x 104,5	100	42	11	122		11		75	107,70	35°		82 €
201-254-17083	P	42 x 104,5	130	42	13	150		16		65	107,70	20°		86 €
201-255-03883	O	42 x 104,5	95	42	10,5	120		10		75	107,70	35°		225 €
201-375-01021	A	48 x 116,5	130	48	10	150	90	10	3	86	120	35°		79 €
201-375-01070	O	48 x 116,5	95	48	13	120		10		75	120	30°		246 €
201-375-01114	A	48 x 116,5	130	48	12	150	90	10	3	86	120,00	35°		62 €
201-375-15707		48 x 116,5		48		150	90	10	3	86	120,00	35°	Flansch ungebohrt Flange not bored	62 €
201-376-03890	A	48 x 116,5	156	48	14	180	110	12	3	86	120,00	35°		99 €
201-376-15081	A	48 x 116,5	156	48	12	180	110	12	3	86	120,00	35°		99 €
201-376-16352	P	48 x 116,5	130	48	13	152		16		86	120,00	35°		73 €
201-376-16632	P	48 x 116,5	100	48	13	122		14		75	120,00	35°		88 €
201-376-17109	P	48 x 116,5	100	48	11	122		13		75	120,00	35°		88 €
201-490-16161	P	48 x 135,4	150	48	15	180		18		82	138,50	25°		80 €
201-490-16176	P	48 x 135,4	130	48	13	155		16		82	138,50	25°		80 €
201-490-16304	P	48 x 135,4	130	48	13	152		16		82	138,50	25°	IVECO	80 €
201-490-16628	P	48 x 135,4	130	48	13	155		16		102	138,50	44°		88 €
201-490-16661	P	48 x 135,4	130	48	13	152		16		102	138,50	44°	IVECO	99 €
201-410-01093	A	52 x 133	130	52	12	150	90	10	3	95	137,00	35°		160 €
201-410-01094	A	52 x 133	130	52	14	150	90	10	3	95	137,00	35°		160 €
201-410-15712		52 x 133		52		150	90	10	3	95	137,00	35°	Flansch ungebohrt Flange not bored	160 €
201-490-01098	A	52 x 133	155,5	52	14	180	110	12	3	95	137,00	35°		95 €

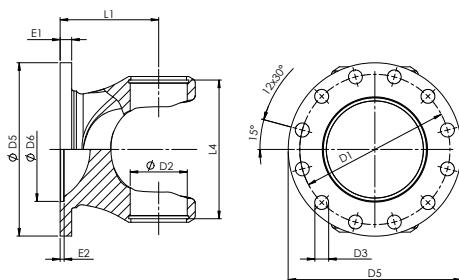
**201 Gabelflansch / Flange**



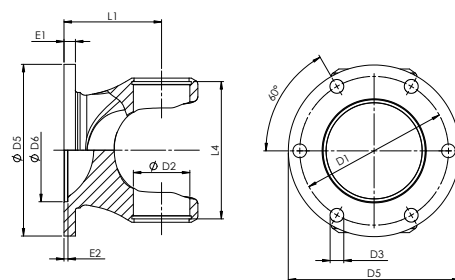
Typ A



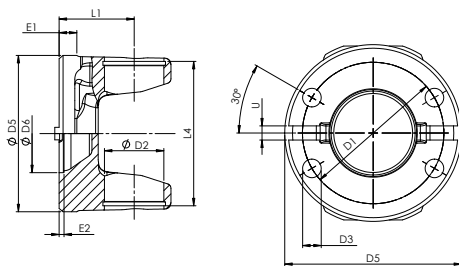
Typ B



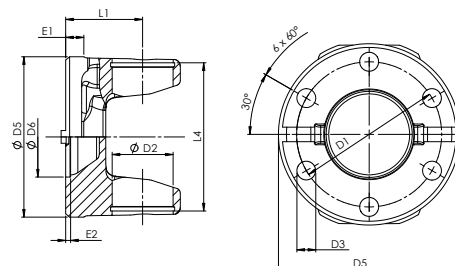
Typ D



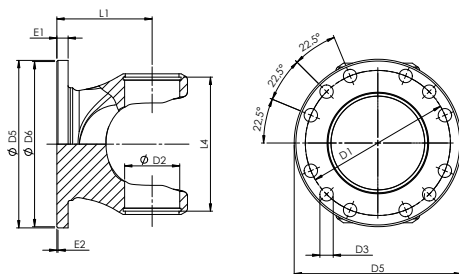
Typ G



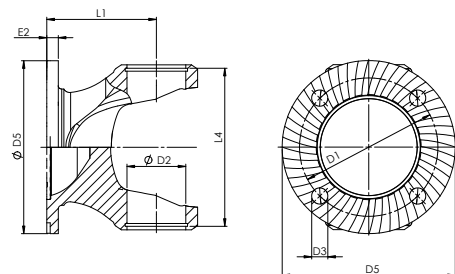
Typ H



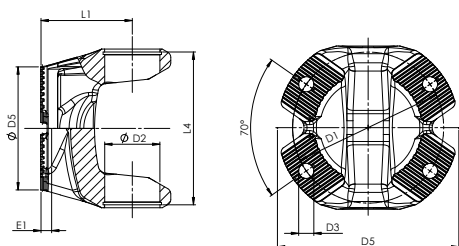
Typ I



Typ K



Typ O



Typ P

## 201 Gabelflansch / Flange

Sachnummer	Typ	Kreuz	D1	D2	D3	D5	D6	E1	E2	L1	L4	α	Hinweis	Preis
Part number	Type	Joint											Reference	Price
201-490-01099	A	52 x 133	156	52	16	180	110	12	3	95	137,00	35°		100 €
201-490-01118	B	52 x 133	156	52	16	180	110	12	3	95	137,00	35°		100 €
201-490-15597	P	52 x 133	130	52	13	153		18		95	137,00	35°		99 €
201-490-15714		52 x 133		52		180	110	12	3	95	137,00	35°	Flansch ungebohrt Flange not bored	95 €
201-490-15882	P	52 x 133	150	52	15	180		18		95	137,00	35°		99 €
201-590-16147	P	52 x 147	150	52	15	180		18		85	151,00	25°		78 €
201-590-16283	P	52 x 147	150	52	15	180		18		108	151,00	44°		92 €
201-590-16369	P	52 x 147	130	52	13	153		16		85	151,00	25°		78 €
201-590-16647	P	52 x 147	130	52	13	152		16		85	151,00	25°	IVECO	110 €
201-600-15579	A	57 x 144	140	57	16	165	95	13	3	100	148,30	35°		250 €
201-600-15591	P	57 x 144	150	57	15	180		18		100	148,30	35°		100 €
201-600-10530	P	57 x 144	130	57	13	150		16		100	148,30	35°		100 €
201-620-16191	P	57 x 152	150	57	15	180		18		92	155,90	25°		79 €
201-620-16759	P	57 x 152	130	57	13	155		16		92	155,90	25°		118 €
201-680-15805	B	57 x 172	156	57	16	180	110	14	3	110	176,35	28°		166 €
201-680-16018	P	57 x 172	150	57	15	180		18		100	176,35	28°		92 €
201-700-15360	B	65 x 172	156	65	16	180	110	15	3	110	176,80	30°		140 €
201-700-15614	A	65 x 172	156	65	14	180	110	15	3	110	176,80	30°		156 €
201-700-15641	P	65 x 172	150	65	15	180		18		100	176,80	28°		129 €
201-700-15718		65 x 172		65		180	110	15	3	110	176,80	30°	Flansch ungebohrt Flange not bored	142 €
201-700-17002	P	65 x 172	150	65	15	180		18		75	176,80	10°	für Kurzwelle for short shaft	188 €
201-705-15458	K	65 x 172	184	65	11,1	203	197	11	3	110	176,80	30°	SAE 1800	245 €
201-710-15563	D	65 x 172	196	65	16	225	140	15	5	110	176,80	30°		192 €
201-710-15564	A	65 x 172	196	65	16	225	140	15	5	110	176,80	30°		192 €
201-710-15722		65 x 172		65		225	140	15	5	110	176,80	30°	Flansch ungebohrt Flange not bored	192 €