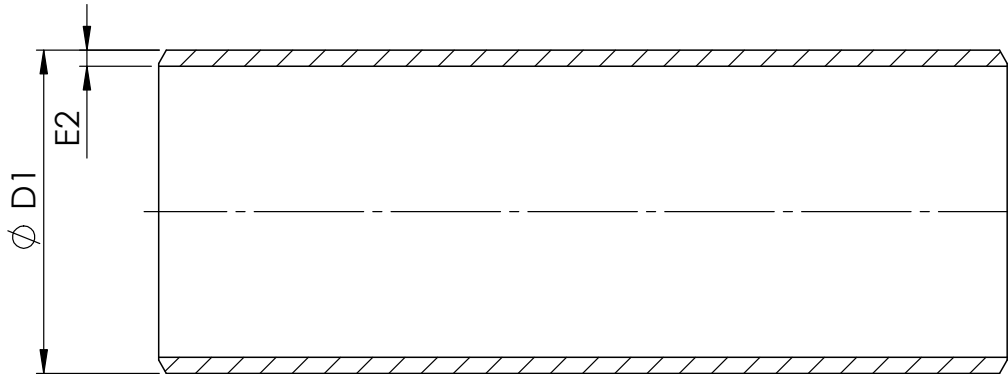


**310 Gelenkwellenrohr in Stangen ca. 6m**  
**310 Propeller shaft tube, size ca. 6m**



Sachnummer	D1	Abmessung	E2	kg/m	Preis je m
Part number		Dimensions			Price / m
310-000-93410	52	52X4	4,0	4,74	41 €
310-000-93416	70	70X4	4,0	6,51	58 €
310-000-93419	80	80X3,5	3,5	6,6	54 €
310-000-93421	85	85X5	5,0	9,86	54 €
310-000-93422	88	88X4,5	4,5	9,27	52 €
310-000-93427	90	90X5,5	5,5	11,46	81 €
310-000-93535	98	98X2	2,0	4,74	39 €
310-000-93431	100	100X6	6,0	13,91	111 €
310-000-93576	100	100X4,5	4,5	10,6	78 €
310-000-93568	120	120X4	4,0	11,44	76 €
310-000-93569	120	120X3	3,0	8,66	59 €
310-000-93571	120	120X6	6,0	16,87	93 €
310-000-93600	120	120X5	5,0	14,18	85 €
310-000-93567	140	140X5	5,0	16,65	103 €
310-000-93594	150	150X5	5,0	17,88	117 €